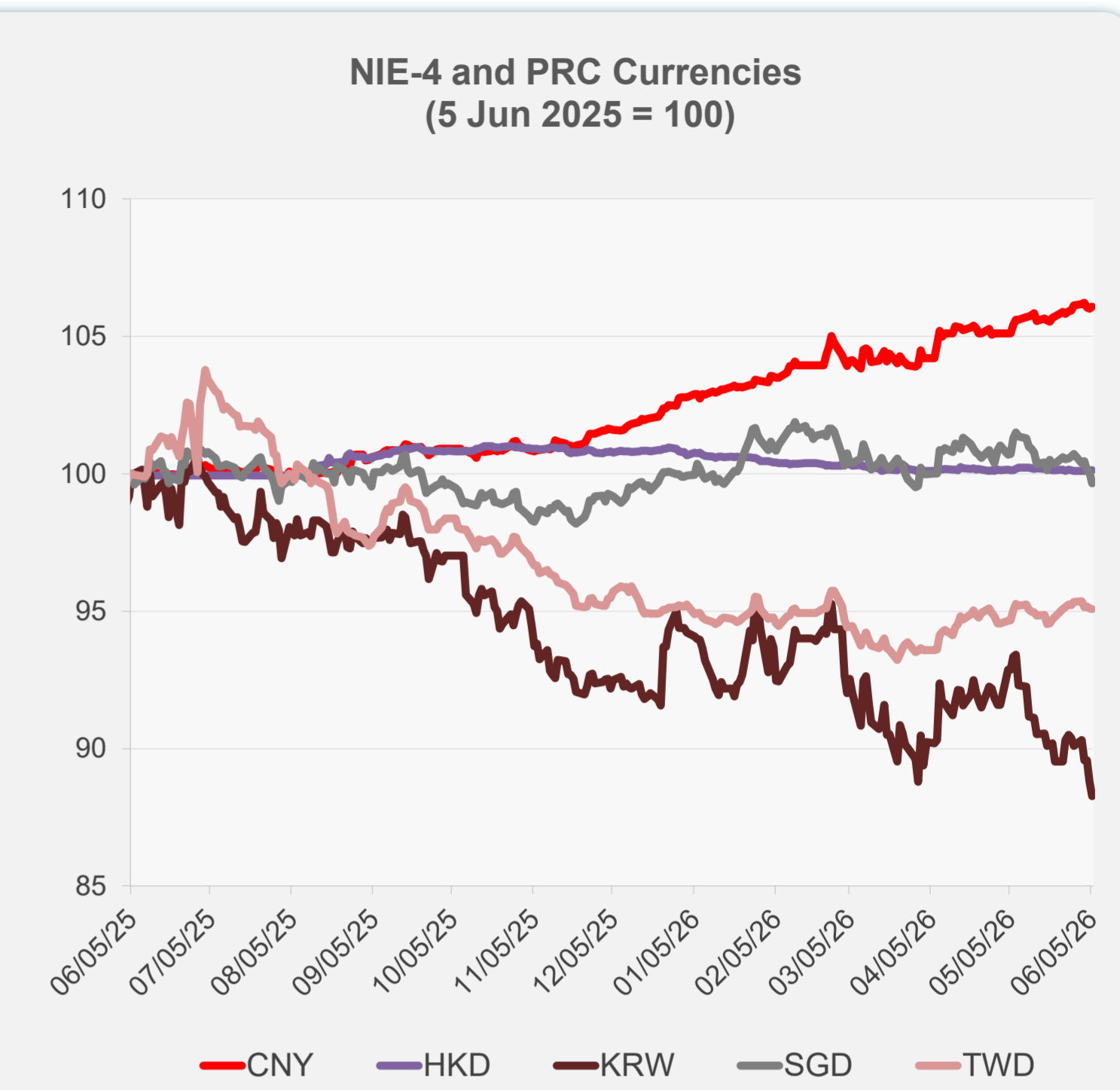
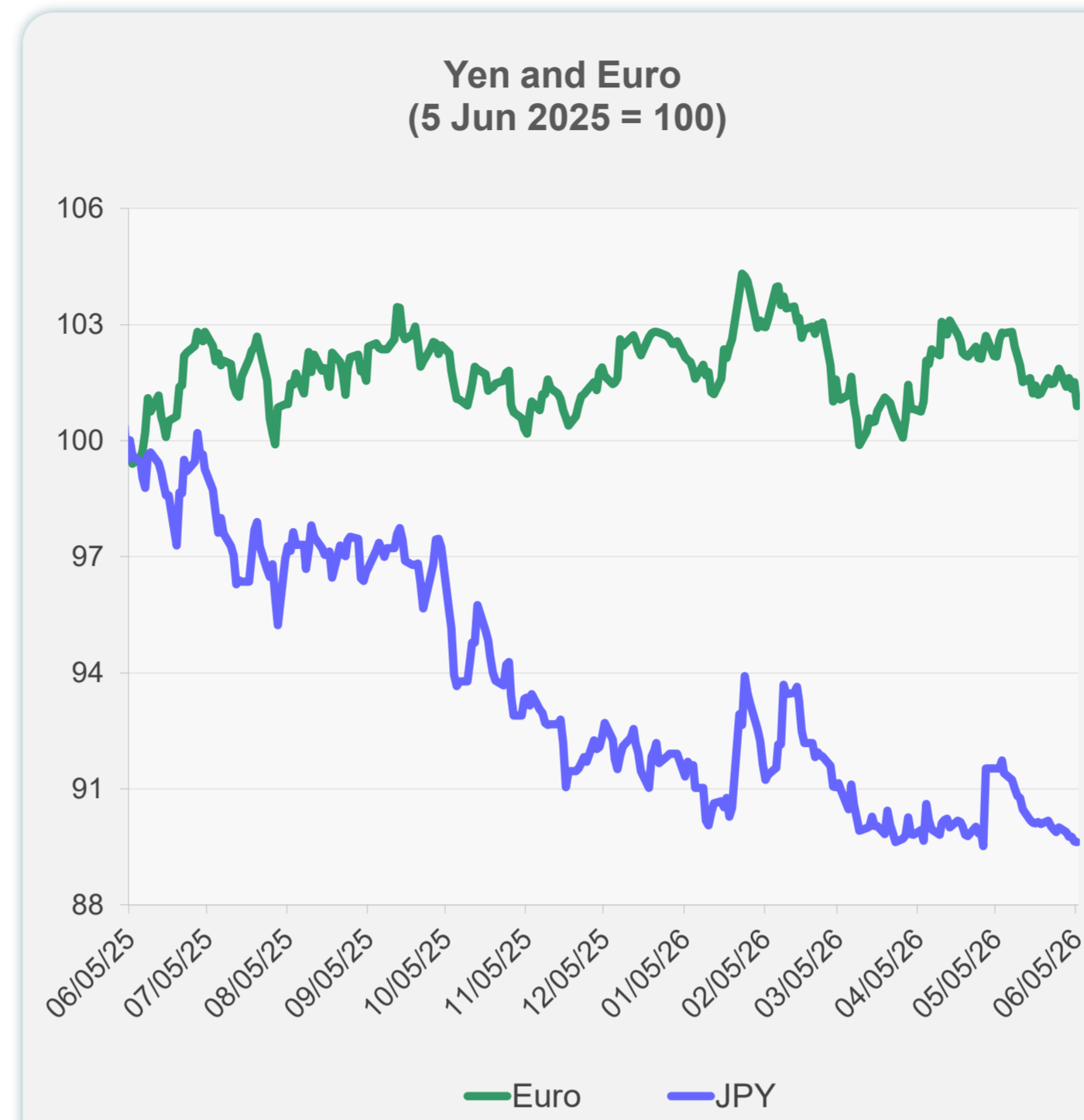
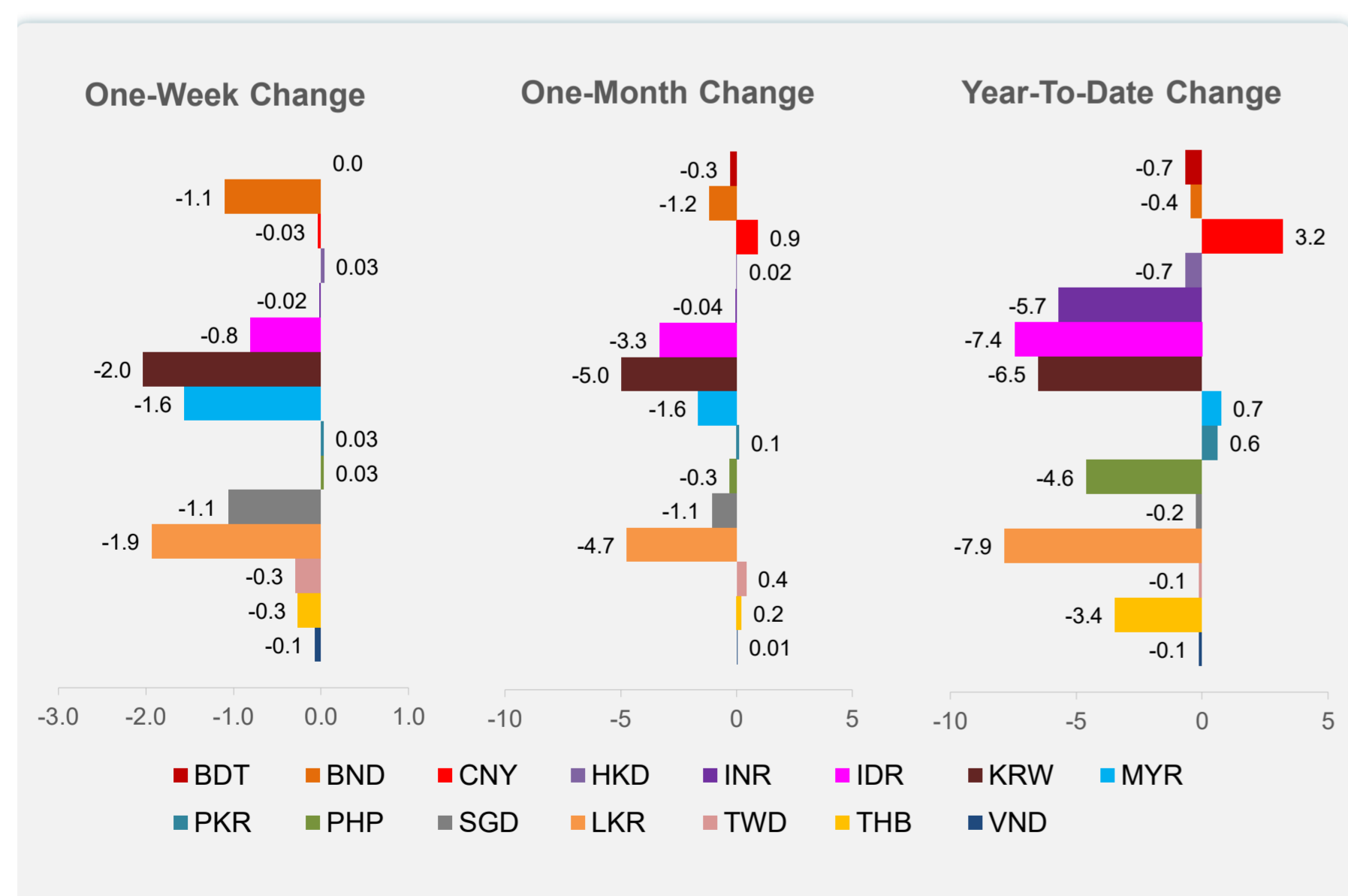
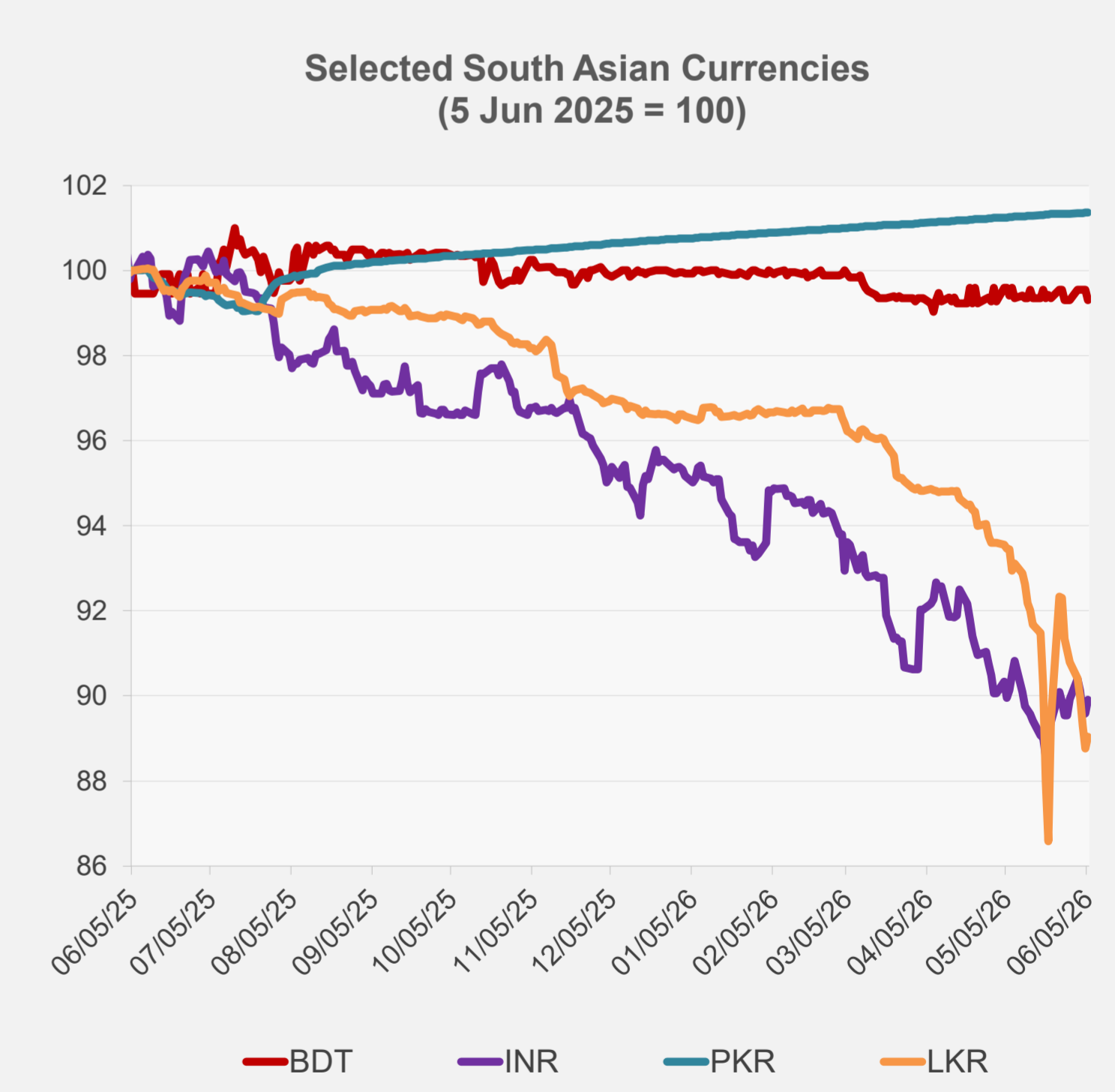
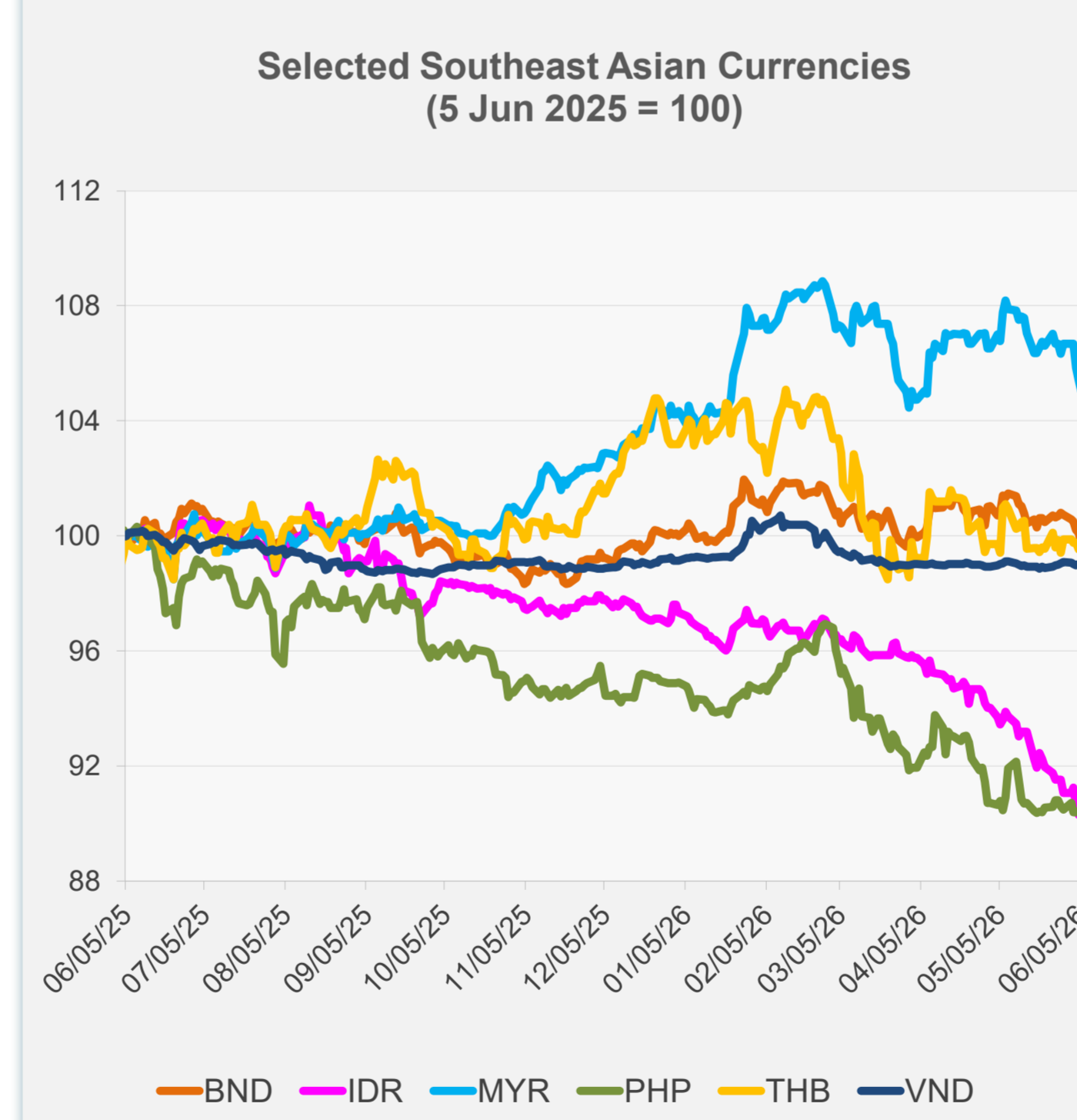


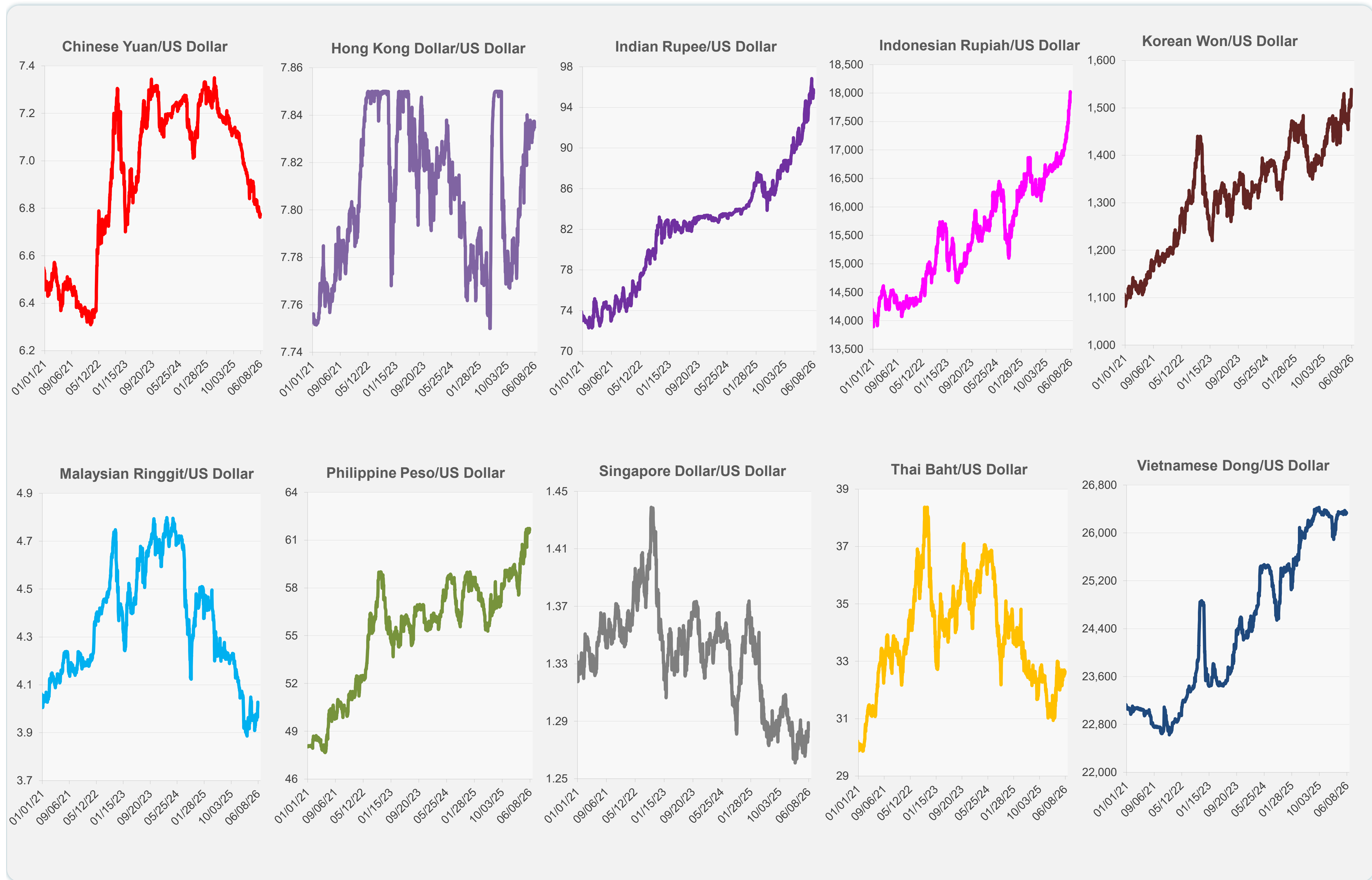
	Latest Closing	% change from Previous Day	% change from 01-Jan-26
Euro	0.87	-0.61	-1.58
Japanese yen (JPY)	159.95	-0.03	-2.48
Bangladeshi taka (BDT)	123.05	-0.24	-0.65
Brunei dollar (BND)	1.29	-0.47	-0.44
Chinese yuan (CNY)	6.77	0.08	3.21
Hong Kong dollar (HKD)	7.83	0.00	-0.66
Indian rupee (INR)	95.40	0.36	-5.68
Indonesian rupiah (IDR)	18,015.00	0.06	-7.44
Korean won (KRW)	1,539.10	-0.61	-6.50
Malaysian ringgit (MYR)	4.03	-0.37	0.74
Pakistan rupee (PKR)	278.40	0.00	0.61
Philippine peso (PHP)	61.64	0.15	-4.59
Singapore dollar (SGD)	1.29	-0.41	-0.23
Sri Lanka rupee (LKR)	336.00	0.30	-7.86
Taipei,China NT dollar (TWD)	31.48	-0.05	-0.12
Thai baht (THB)	32.63	0.08	-3.45
Vietnamese dong (VND)	26,330.00	0.01	-0.11



NIE = Newly Industrialized Economies

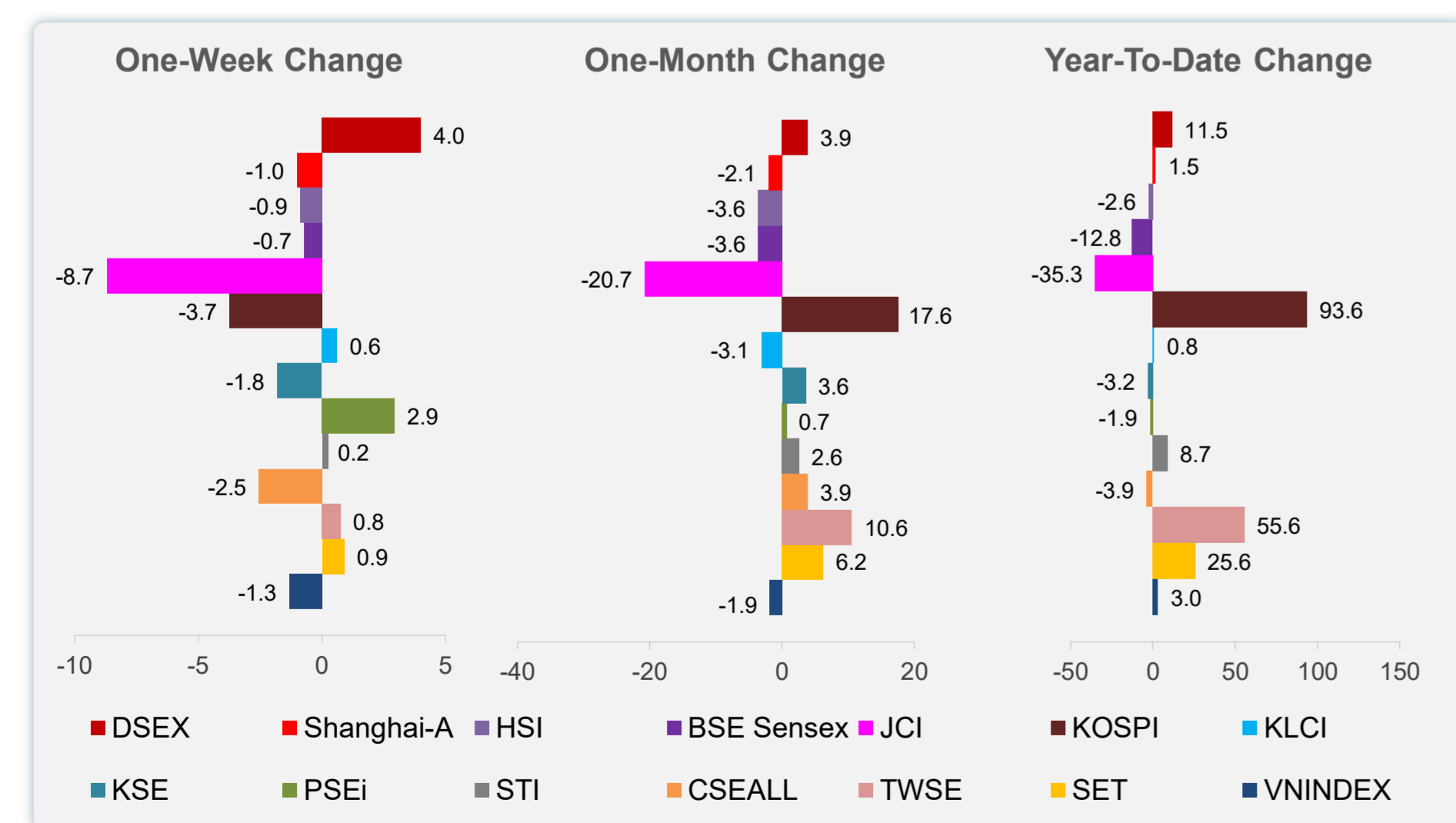
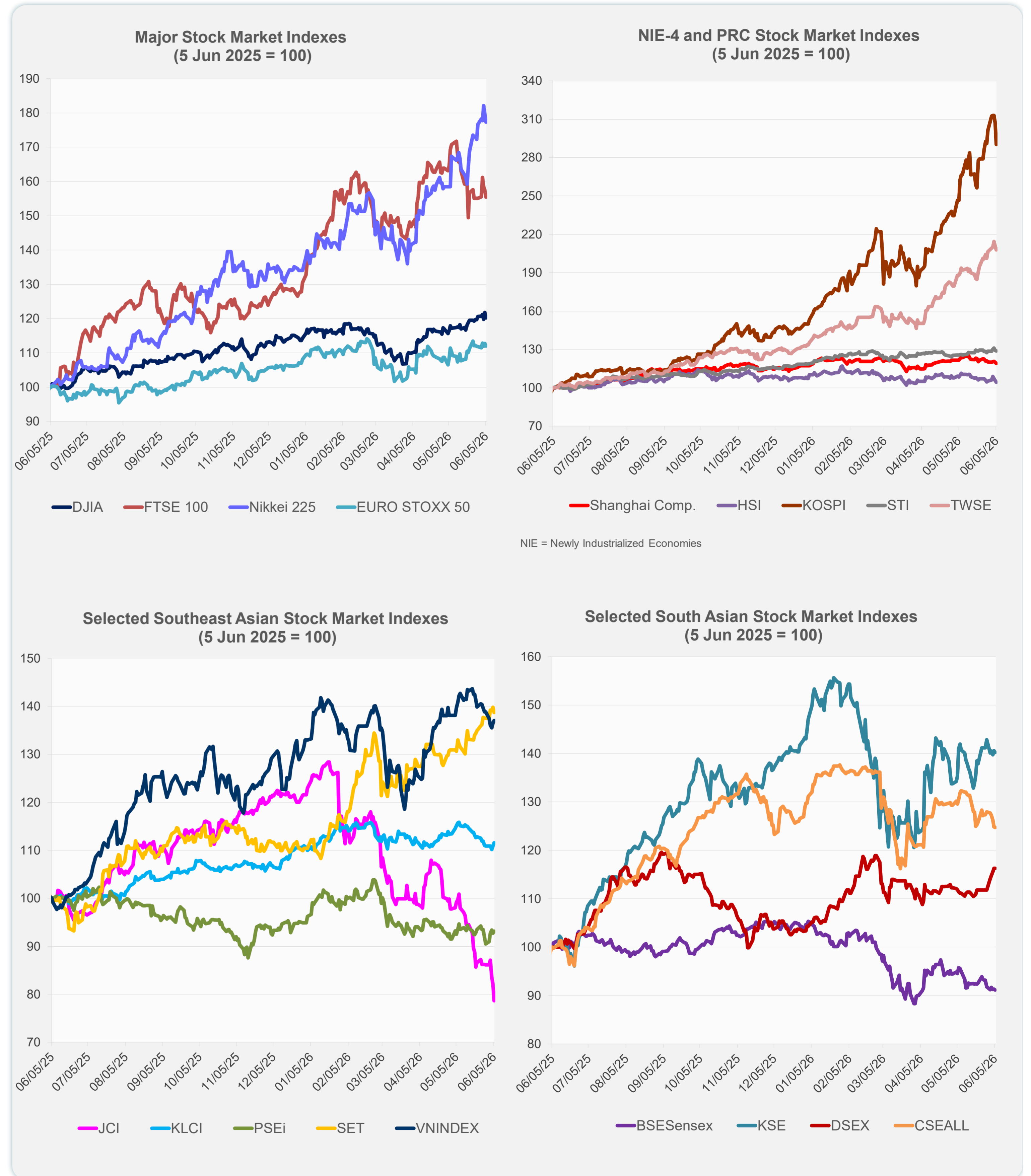


Note: Negative/Decreasing values indicate depreciation of local currency, and positive/increasing values indicate appreciation.  
Source: ADB calculations using data from Bloomberg and Haver Analytics.

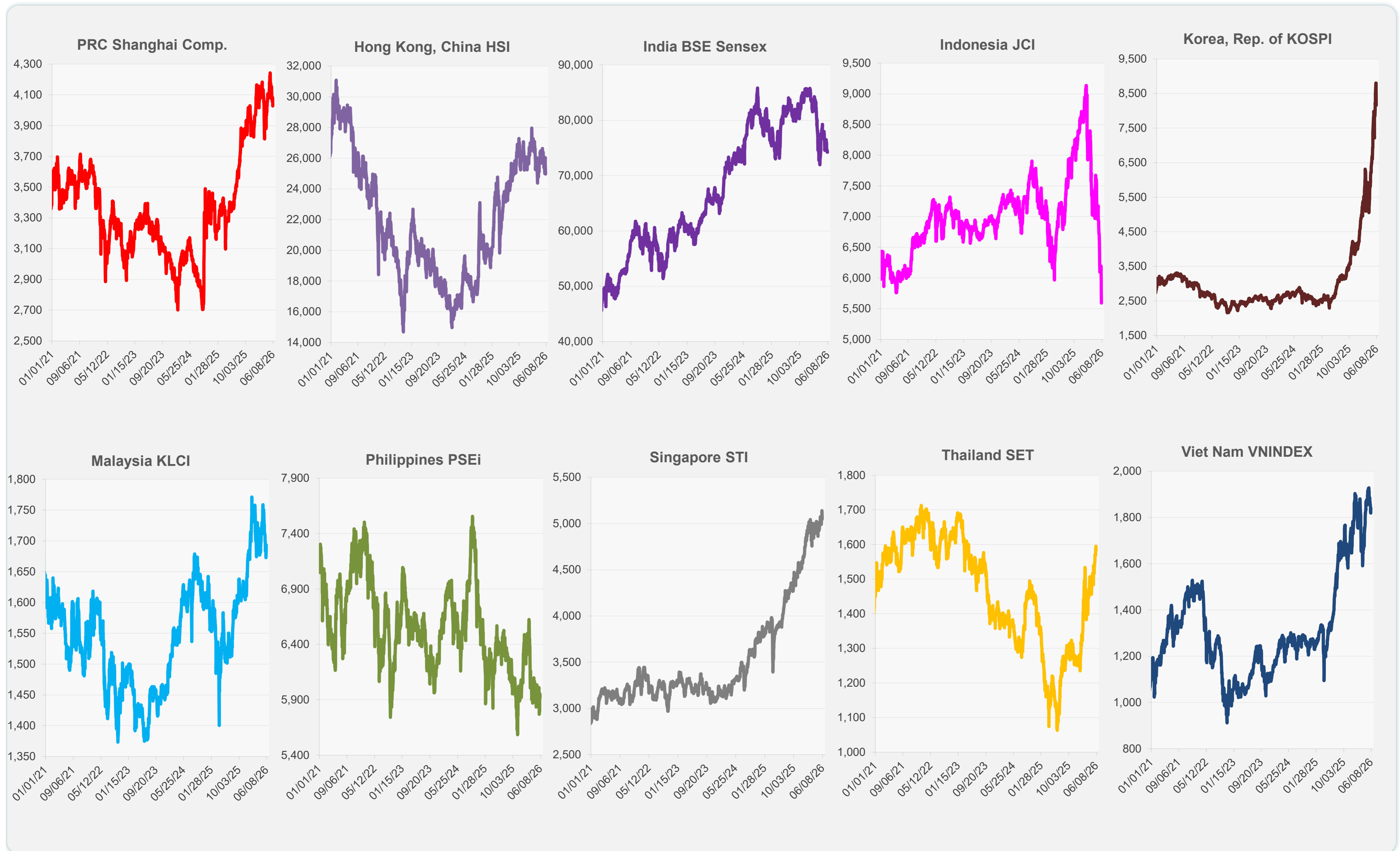


Source: Haver Analytics.

	Latest Closing	% change from Previous Day	% change from 01-Jan-26
US Dow Jones Ind Avg	50,866.78	-1.35	5.83
US NASDAQ	25,709.43	-4.18	10.62
US S&P 500	7,383.74	-2.64	7.86
UK FTSE 100	13,694.19	-1.28	21.60
EURO STOXX 50	6,062.07	-0.68	4.67
Japan NIKKEI 225	66,588.12	-1.31	32.28
Bangladesh DSEX	5,475.00	0.00	11.49
PRC Shanghai Comp.	4,027.74	-0.74	1.48
Hong Kong, China HSI	24,961.95	-1.15	-2.61
India BSE Sensex	74,243.34	-0.16	-12.85
Indonesia JCI	5,594.77	-4.20	-35.30
Korea, Rep. of KOSPI	8,160.59	-5.54	93.65
Malaysia KLCI	1,693.43	0.60	0.79
Pakistan KSE 100	170,802.10	-0.23	-3.21
Philippines PSEi	5,938.38	0.45	-1.89
Singapore STI	5,049.96	-0.35	8.69
Sri Lanka CSEALL	21,744.13	-0.07	-3.89
Taipei, China TWSE	45,070.94	-1.33	55.61
Thailand SET	1,582.60	-0.76	25.64
Viet Nam VNINDEX	1,838.90	0.40	3.05



Sources: ADB calculations using data from Bloomberg and CEIC Data Company.



Sources: ADB calculations using data from Bloomberg and CEIC Data Company.

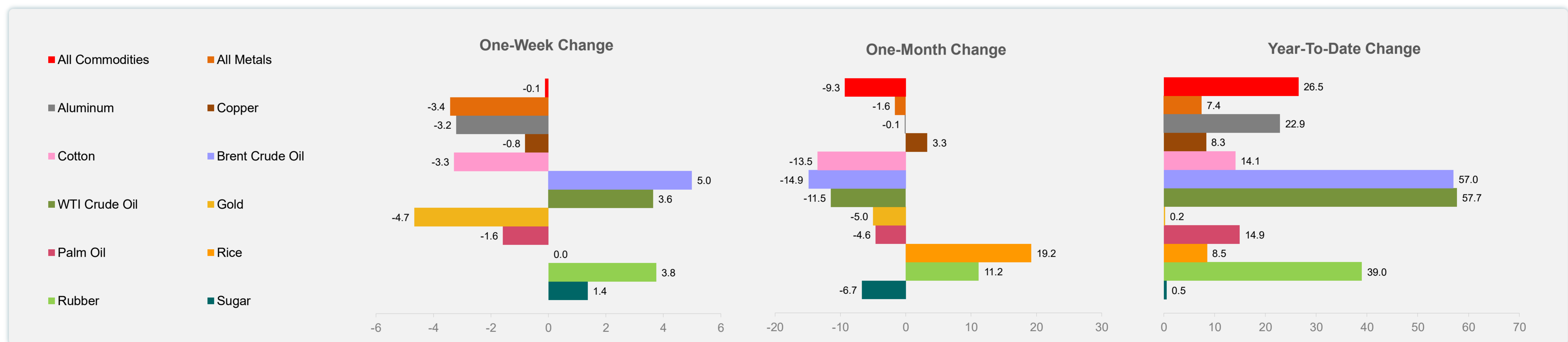
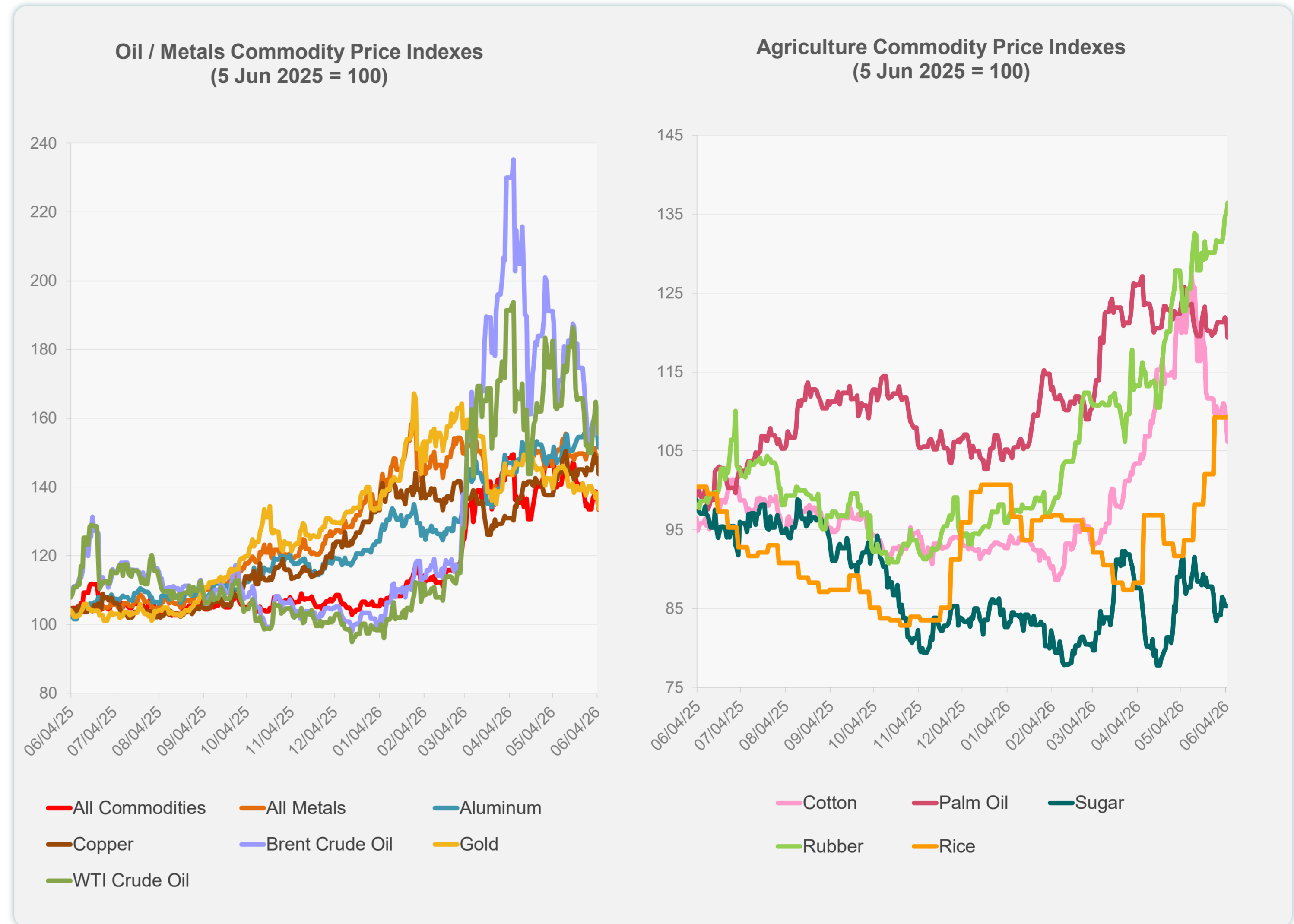
Daily Market Watch  
**COMMODITY PRICES**

8 June 2026, 9:00 AM Manila

	Unit	Latest Closing	% change from Previous Day	% change from 01-Jan-26
S&P All Commodities	US\$	693.82	-2.22	26.49
S&P All Metals	US\$	476.76	-2.80	7.44
Aluminum	US\$/metric ton	3,646.89	-2.44	22.87
Copper	US\$/metric ton	13,490.32	-3.09	8.33
Cotton	US cents/lb	70.75	-1.59	14.08
Brent Crude Oil	US\$/barrel	98.03	-0.84	56.98
WTI Crude Oil	US\$/barrel	90.54	-2.69	57.68
Gold	US\$/troy oz	4,328.45	-3.27	0.21
Palm Oil	US\$/metric tonne	1,113.15	-1.81	14.92
Rice <sup>1</sup>	US\$/metric ton	484.00	0.00	8.52
Rubber <sup>2</sup>	US\$/kg	298.80	0.95	38.98
Sugar	US cents/lb	14.87	0.00	0.54

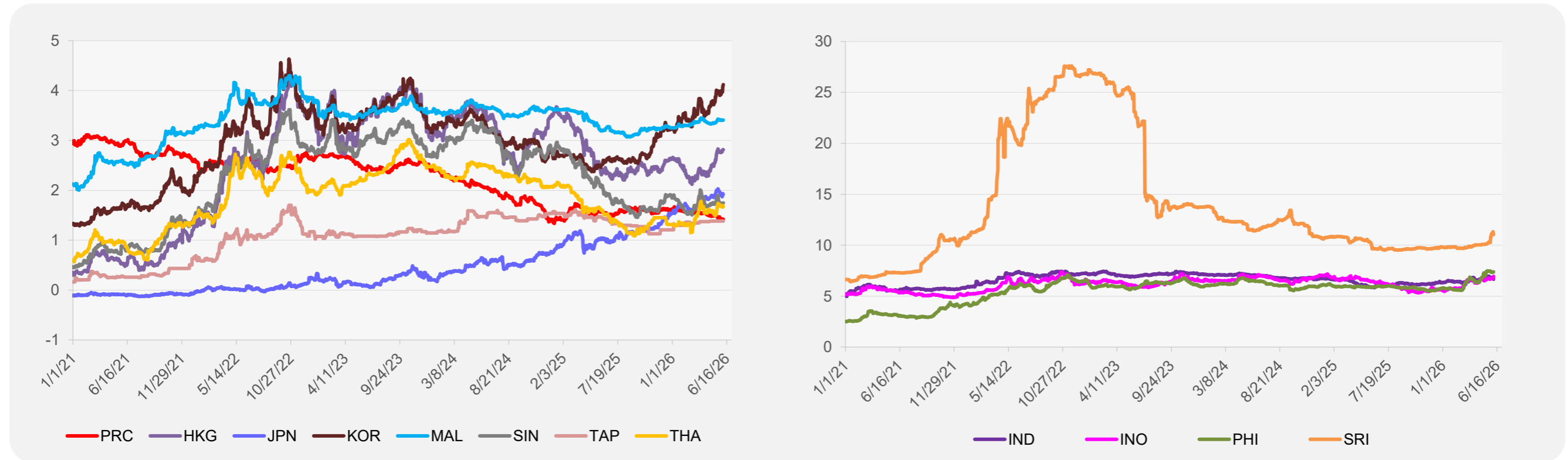
<sup>1</sup> Latest closing price from 27 May 2026.

<sup>2</sup> Singapore Exchange, Ribbed Smoked Sheet Rubber.

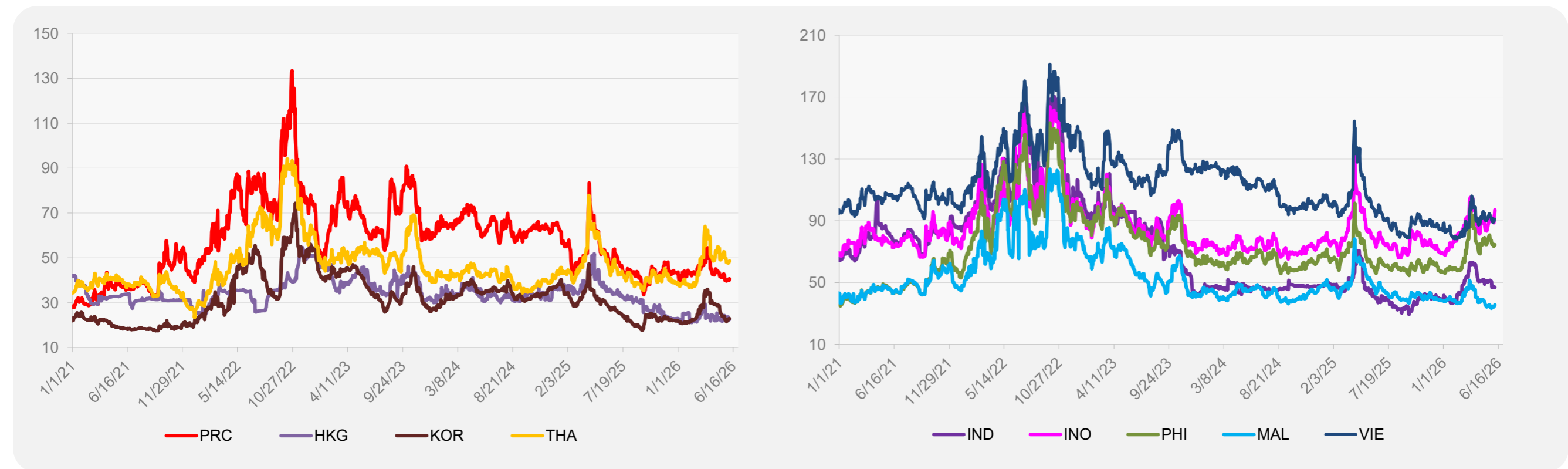


Source: ADB calculations using data from Bloomberg.

### 5-YEAR LOCAL CURRENCY GOVERNMENT BOND YIELDS (%)



### 5-YEAR CREDIT DEFAULT SWAP<sup>1</sup>



<sup>1</sup> In USD and based on sovereign bonds.  
Source: ADB calculations using data from Bloomberg.